

SAE Members-Only Benefits

DID YOU KNOW?

If you attended five Section events at the non-member rate, you could have paid for an SAE membership!

Elite Membership: \$249 a year

An Elite Membership is the ultimate SAE experience. It is for those members in the prime of their career, looking to stay well-informed of the latest information. It offers the most discounts and privileges of any SAE membership option at \$249 a year:

- **NEW:** 10% discount on Vehicle Electrification (VE) Certificate of Competency AND Design Review
- 20% discount on books, technical papers and standards
- Member discounts to more than 100 books and 2,600 technical papers published annually
- 30% discount on select professional development seminars
- Access to My Standards Tracking which provides the ability to request email alerts when Aerospace and Ground Vehicle Standards are being updated
- Discounts on registration for SAE-owned conferences
- Complimentary subscription to THREE SAE industry magazines of your choice
- Online access to EngineerXchange®, a members-only online resource and professional network that lets you see and share technical information, articles, blogs, and chat groups
- 20% discount on professional development seminars, engineering academies and e-learning products
- Local and national volunteer opportunities that build leadership skills
- Complimentary subscription to SAE *Update*, our members-only digital newsletter
- Advance notice of new industry jobs through the online SAE Career Center
- Advance notice of new technical papers prior to SAE conferences
- Entry into the Members-Only lottery for free conference registration
- Access to SAE's Partner Program on insurance, travel services, car rental, shipping, online backup and sharing, and more

- Online access to EngineerXchange®, a members-only online resource and professional network that lets you see and share technical information, articles, blogs, and chat groups
- 15% discount on professional development seminars, engineering academies and e-learning products
- Local and national volunteer opportunities that build leadership skills
- Complimentary subscription to SAE *Update*, our members-only digital newsletter
- Advance notice of new industry jobs through the online SAE Career Center
- Advance notice of new technical papers prior to SAE conferences
- Entry into the Members-Only lottery for free conference registration
- Access to SAE's partner discounts on insurance, travel services, car rental, shipping, online backup and sharing, and more

Classic Membership: \$81 a year

A Classic membership is a good place to begin and establish your career at \$81 a year and includes many benefits:

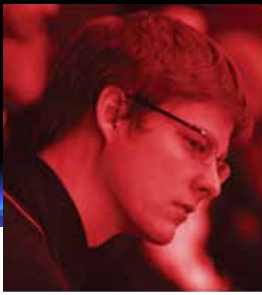
- 10% discount on books, technical papers and standards
- Member discounts to more than 100 books and 2,600 technical papers published annually
- Complimentary subscription to one SAE industry magazine of your choice
- Access to My Standards Tracking which provides the ability to request email alerts when Aerospace and Ground Vehicle Standards are being updated
- Online access to EngineerXchange®, a members-only online resource and professional network that lets you see and share technical information, articles, blogs, and chat groups
- 10% discount on professional development seminars, engineering academies and e-learning products.
- Local and national volunteer opportunities that build leadership skills
- Complimentary subscription to SAE *Update*, our members-only digital newsletter
- Advance notice of new industry jobs through the online SAE Career Center
- Discounts on registration for SAE-owned conferences
- Advance notice of new technical papers prior to SAE conferences
- Access to SAE's partner discounts on insurance, travel services, car rental, shipping, online backup and sharing, and more

Premium Membership: \$154 a year

A Premium Membership has its privileges with deep member discounts on publications, education, and access to conferences and standards. A Premium membership is for working engineers looking to stay sharp, who want to advance their careers to the next level. Priced at \$154 a year, benefits include:

- **NEW:** 10% discount on Vehicle Electrification (VE) Certificate of Competency AND Design Review
- 15% discount on books, technical papers and standards
- Member discounts to more than 100 books and 2,600 technical papers published annually
- 30% discount on select professional development seminars
- Access to My Standards Tracking which provides the ability to request email alerts when Aerospace and Ground Vehicle Standards are being updated
- Discounts on registration for SAE-owned conferences
- Complimentary subscription to TWO SAE industry magazines of your choice

For additional information on the latest benefits, visit www.sae.org/membership.



FREQUENTLY ASKED QUESTIONS

About Your SAE Membership

How do I get the most from my SAE membership?

Visit the SAE website at www.sae.org to familiarize yourself with our programs, products, and services.

- To review the full list of member benefits available to you, you can visit www.sae.org/membership/benefits.
- To activate your EngineerXchange® profile and watch a tutorial video on how to use it, visit www.ex.sae.org.
- To get involved in SAE with our volunteer opportunities, visit <http://volunteers.sae.org/>.

What is EngineerXchange®?

EngineerXchange® is an online “members only” professional network that provides access to powerful networking tools, career counseling/management features, and advance access to SAE technical content. Activate your EngineerXchange® profile by going to www.ex.sae.org.

How do I find a local SAE section within traveling distance?

Visit www.sae.org/membership and click on “Find Your Section” or go to “MySAE” and click on “My Member Info.” Your local section will be listed along with the section’s link.

What is the length of my membership, and how will I know when to renew my next year’s membership dues?

Your SAE membership is valid for twelve months. It expires at the **end of the month** in which you join, one year later. About two months in advance of your membership’s expiration date, you will receive a renewal notification. There are various ways to renew: online at www.sae.org/membership, your renewal bill via mail with a check or credit card to SAE International, or the Automatic Renewal option.

How do levels relate to grades of membership?

Grade: You are assigned a grade of membership, Student, Associate, or Member, based on your educational background, experience and level of engineering involvement.

Level: You can choose any level of membership—Elite, Premium, or Classic, depending on the amount of benefits you desire, regardless of your grade.

How do I update my personal information?

You can update your contact information by going to “MySAE” and clicking on Manage Addresses, Change User ID/Email or Change Password buttons. You can also find the status of an order or access the lists of Standard Committee’s published documents or works-in-progress, plus more. Click “MySAE” from SAE’s Main or Membership page: www.sae.org/membership.

How do I obtain my membership card?

Your membership card is accessible by going into your “MySAE” account on the SAE web site and under “My Member Info.” Click on “Print Membership Card,” enter your email address, and you will receive your membership card within minutes. You can also print your membership card from EngineerXchange®.

Answers to these questions plus others can be found on the Membership page of the SAE web site under the FAQ link:

www.sae.org/membership/faqs.

If you should ever have any additional questions, please contact the SAE Membership Team:

Toll-free: 1-877-606-7323 (U.S. and Canada)
Phone: 1-724-776-4970 (Outside U.S. & Canada)
Fax: 1-724-776-0790
Email: CustomerService@sae.org

